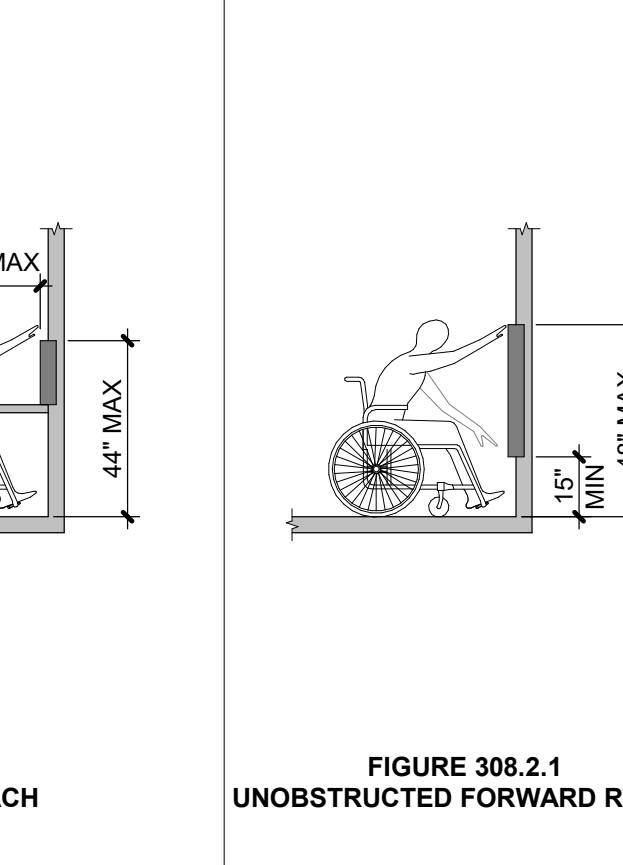
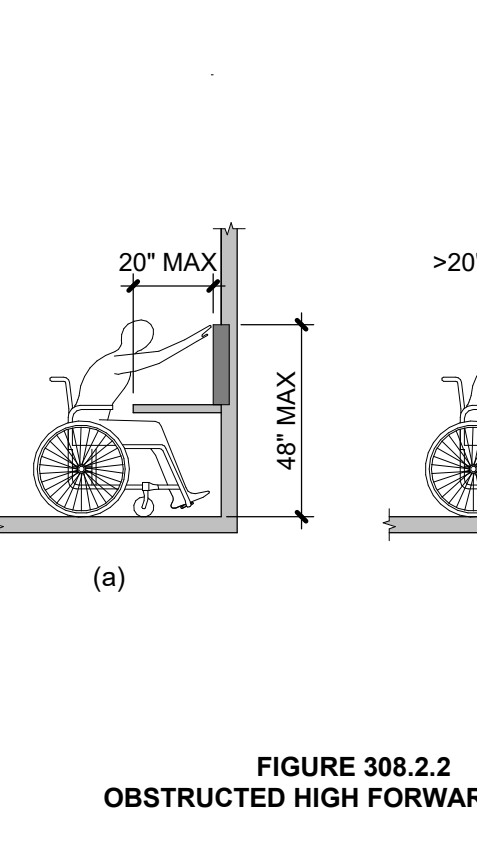
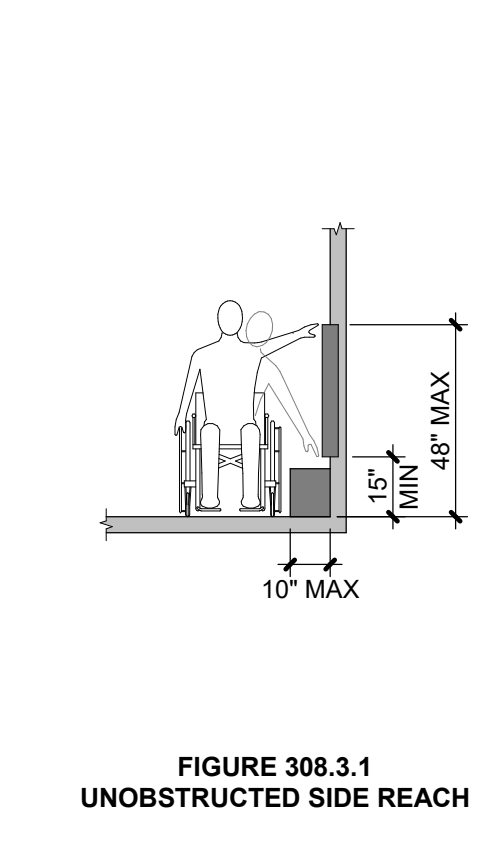
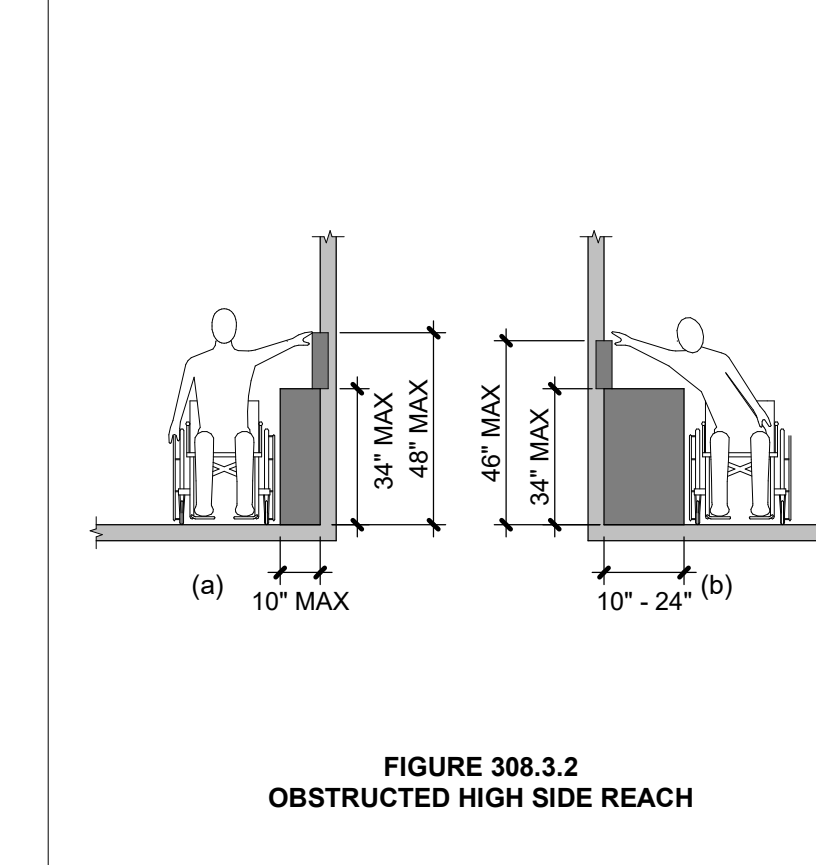
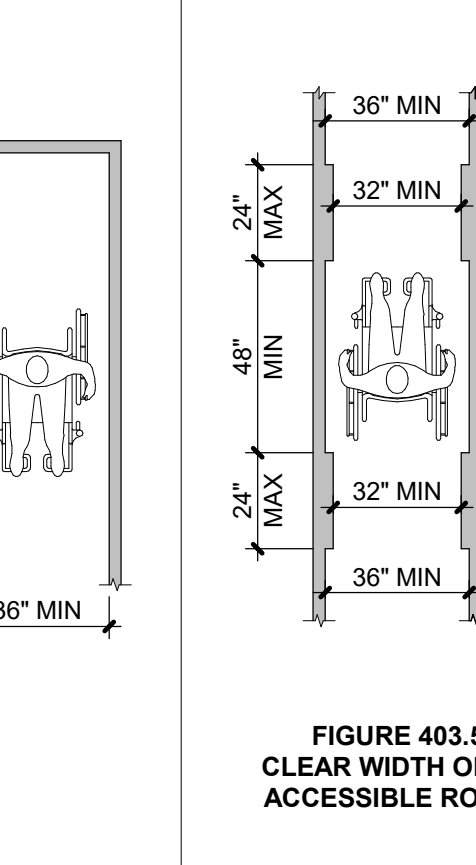
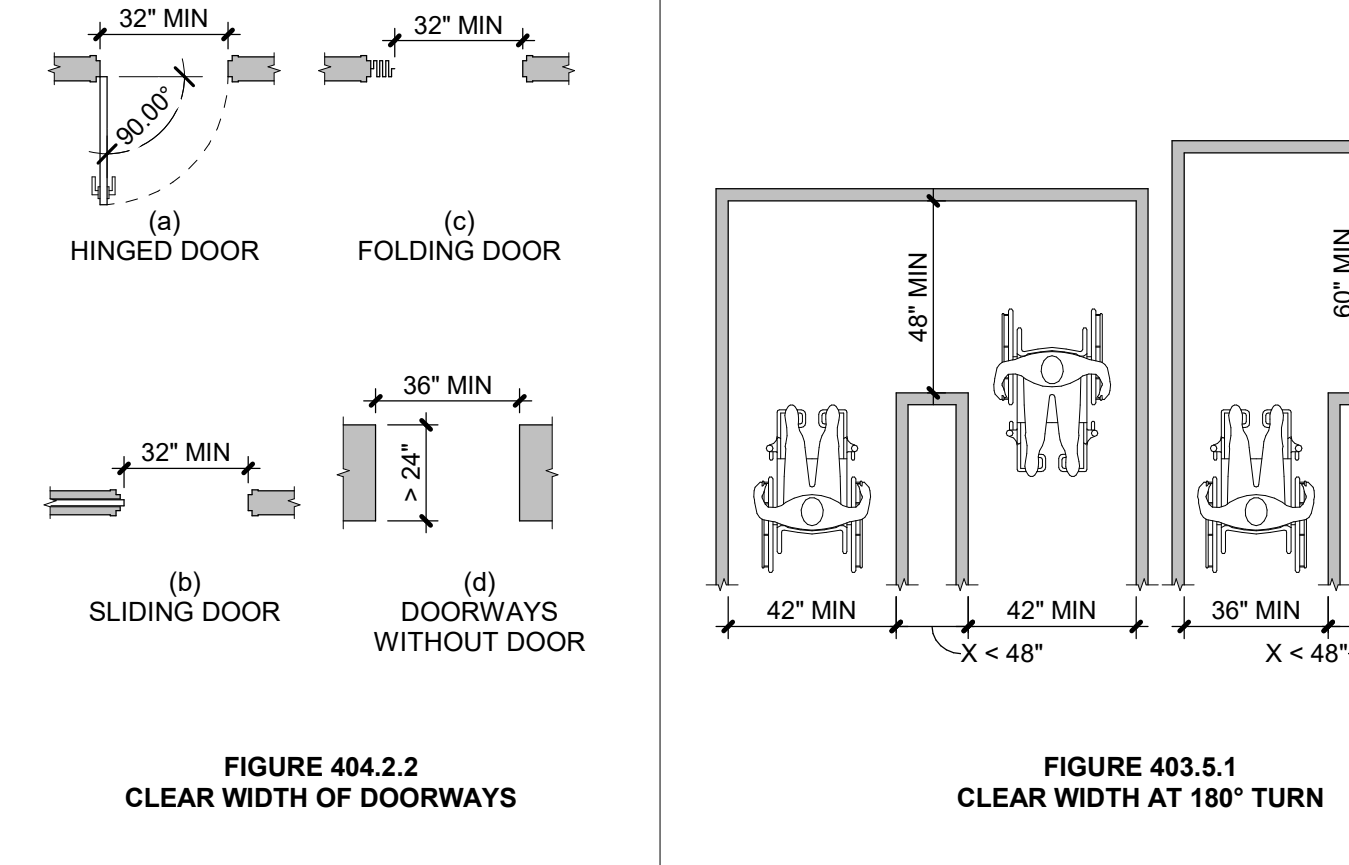
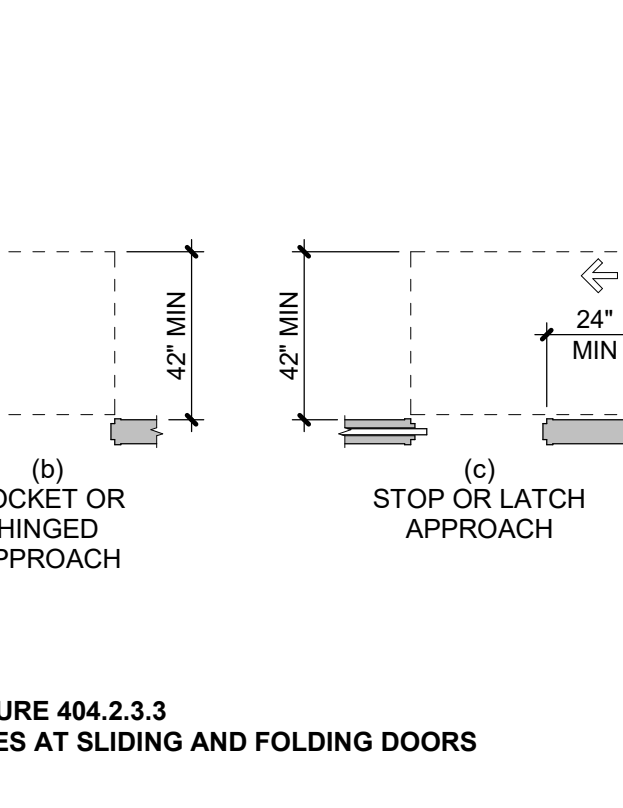
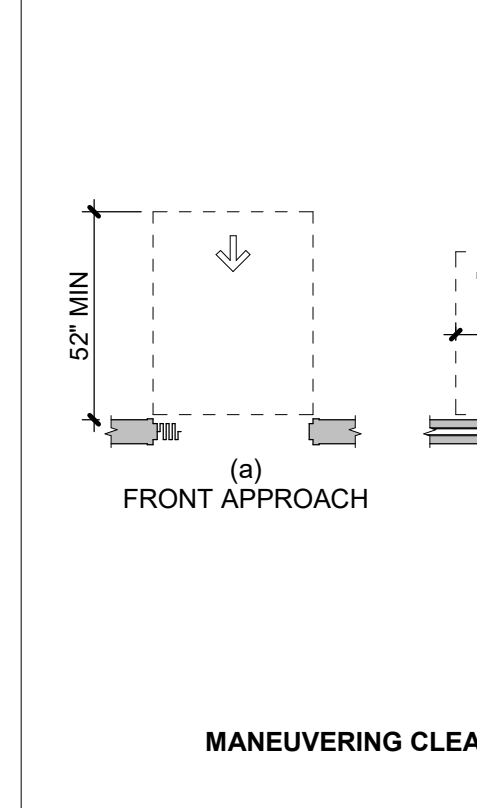
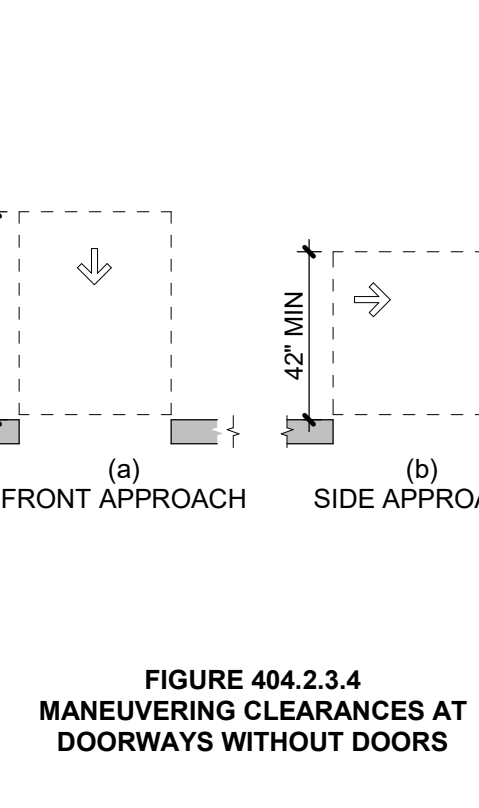
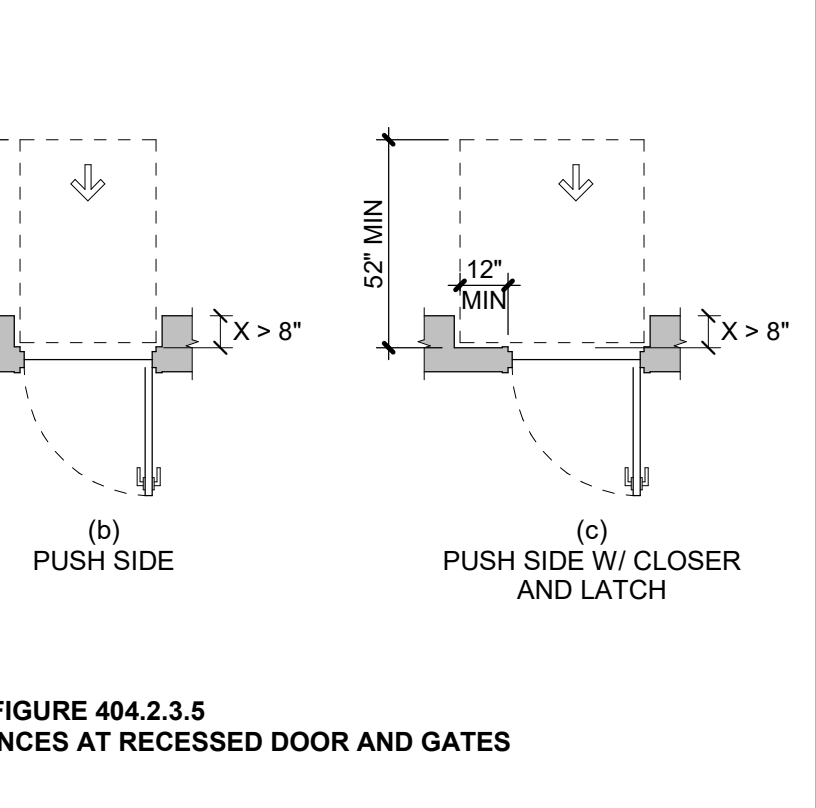
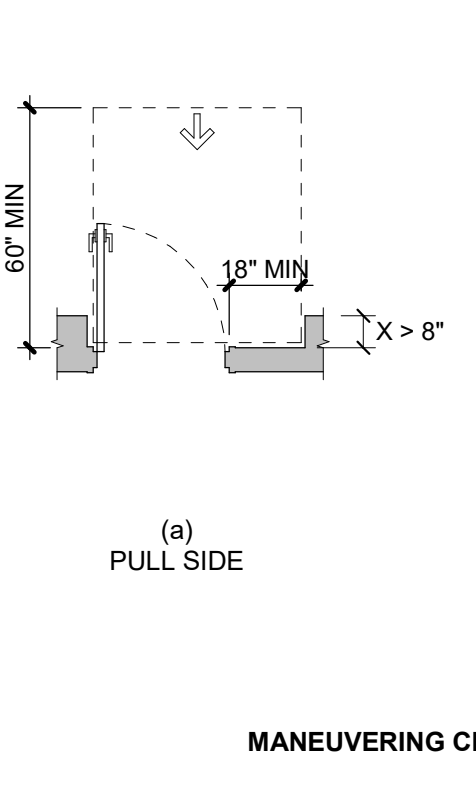
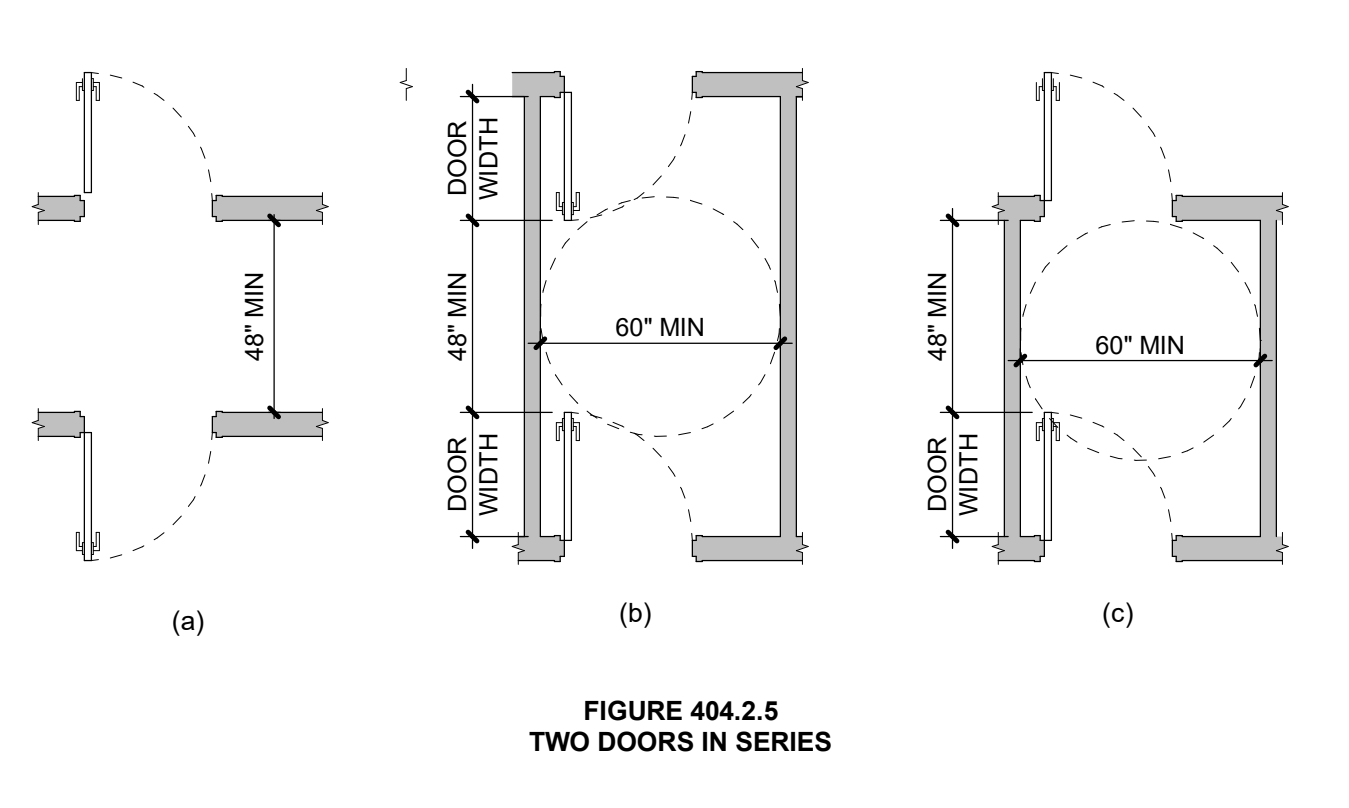
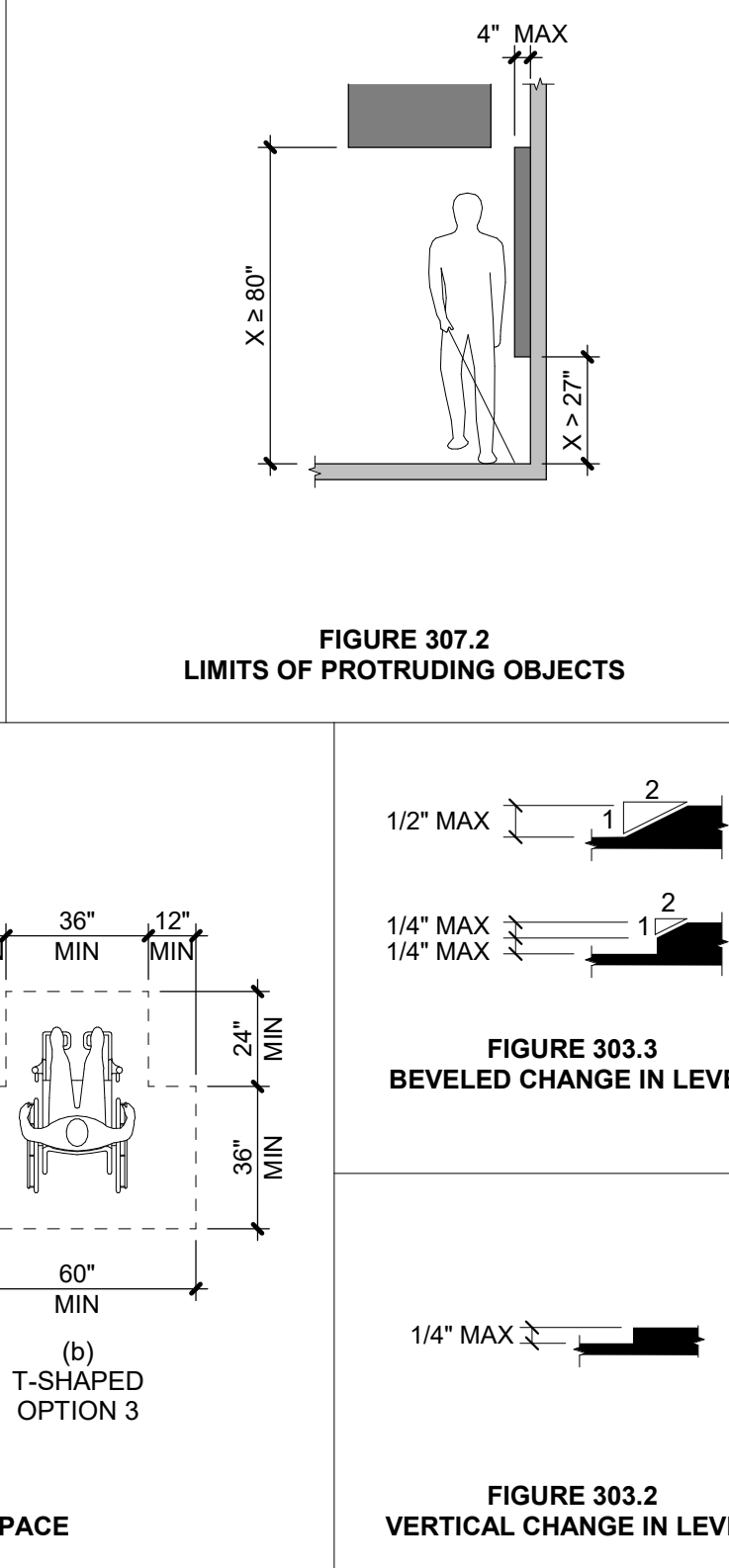
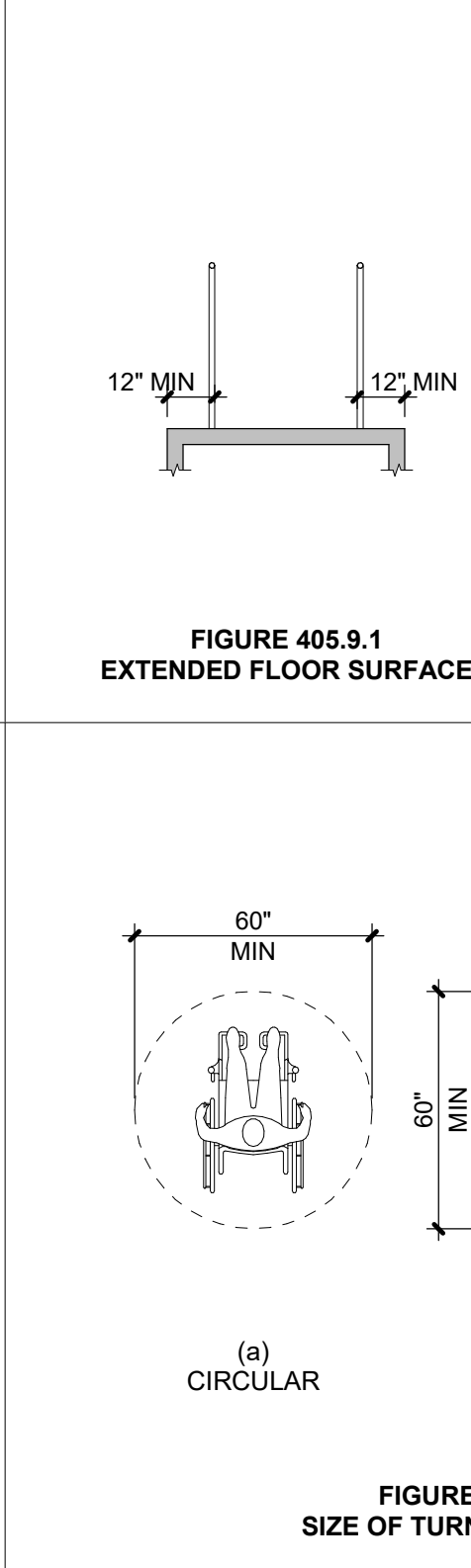
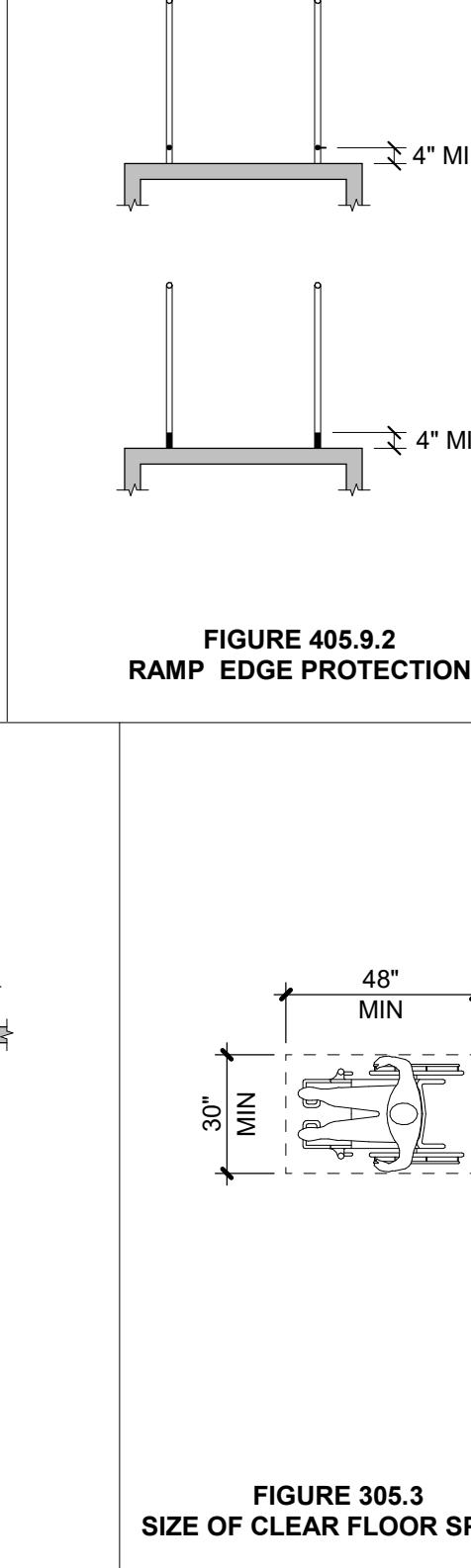
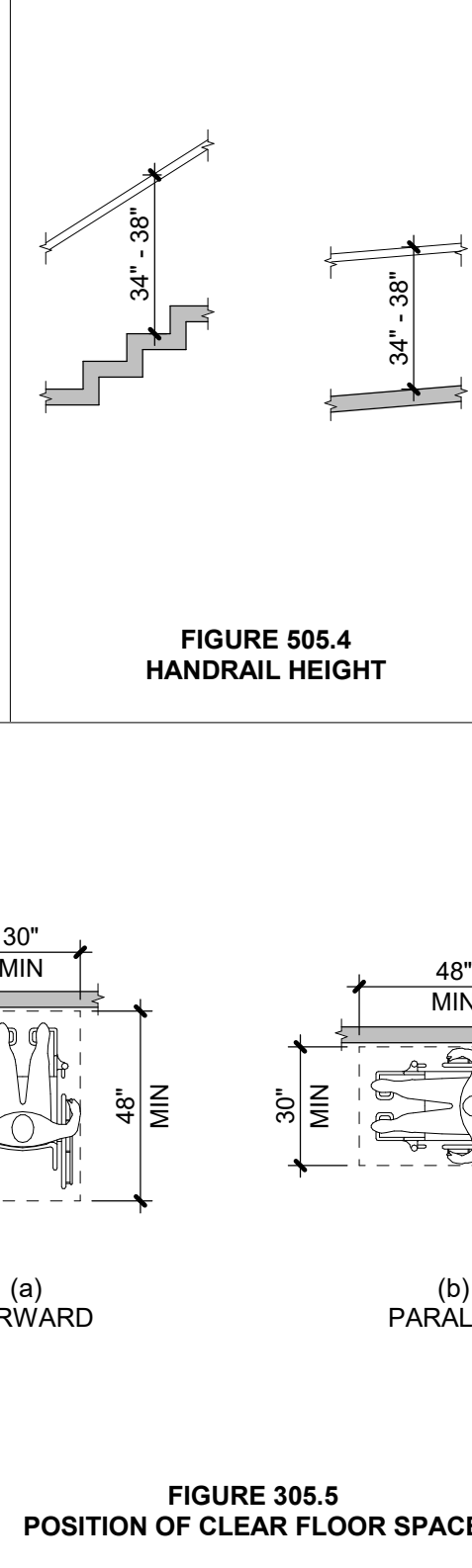
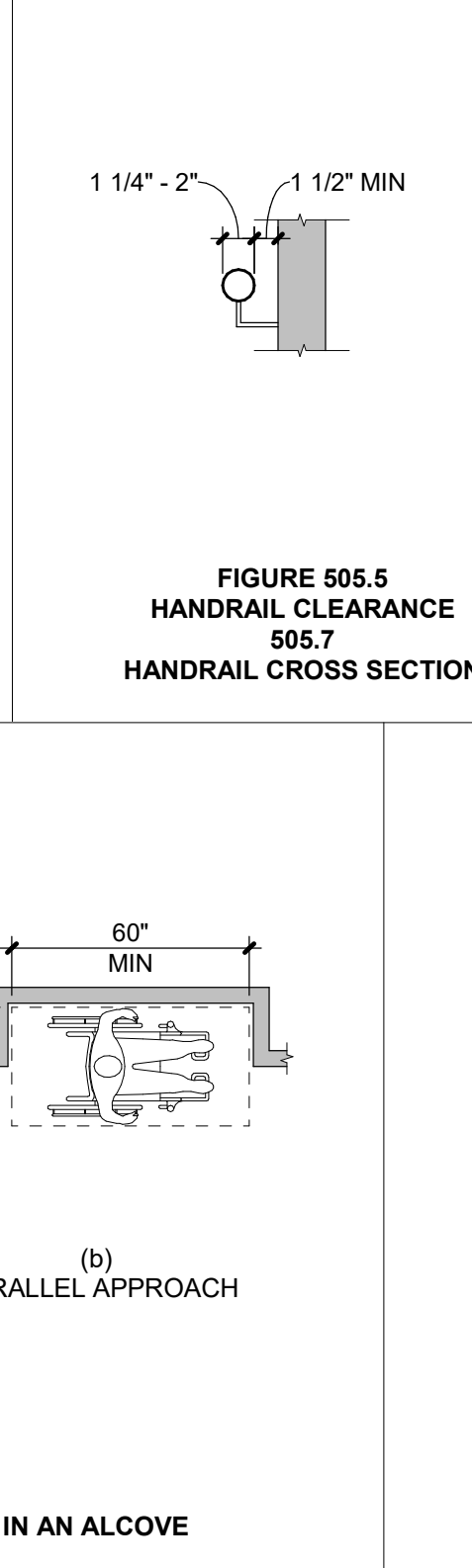
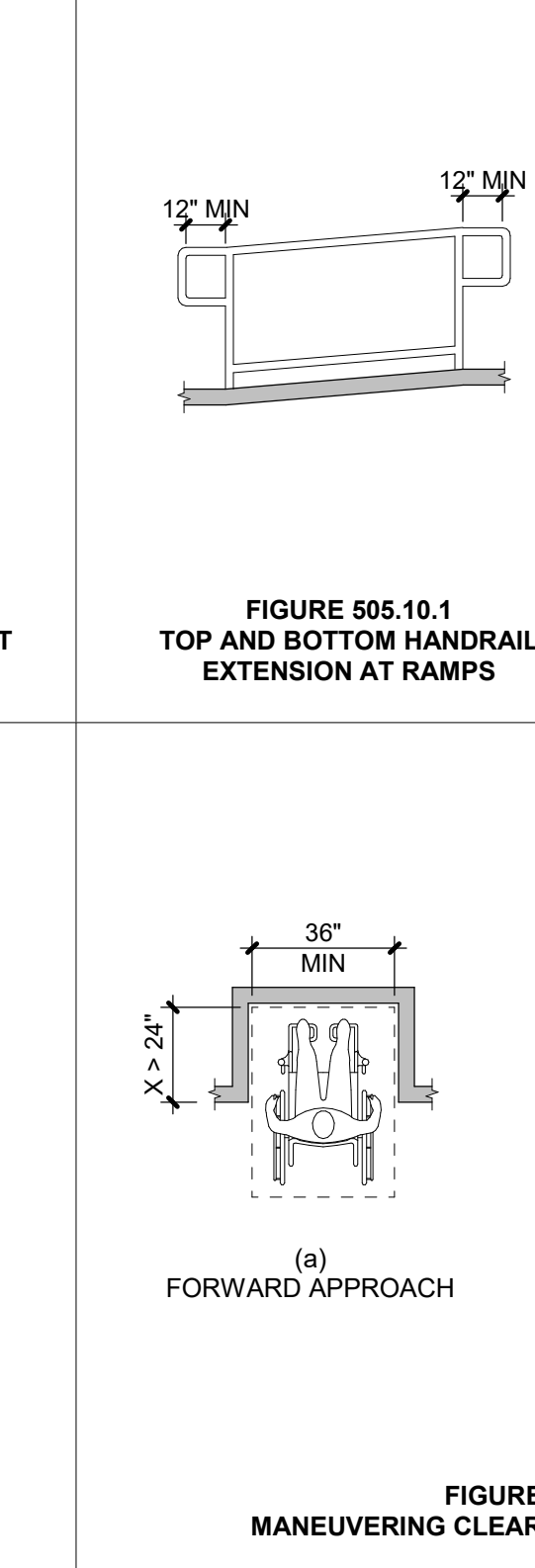
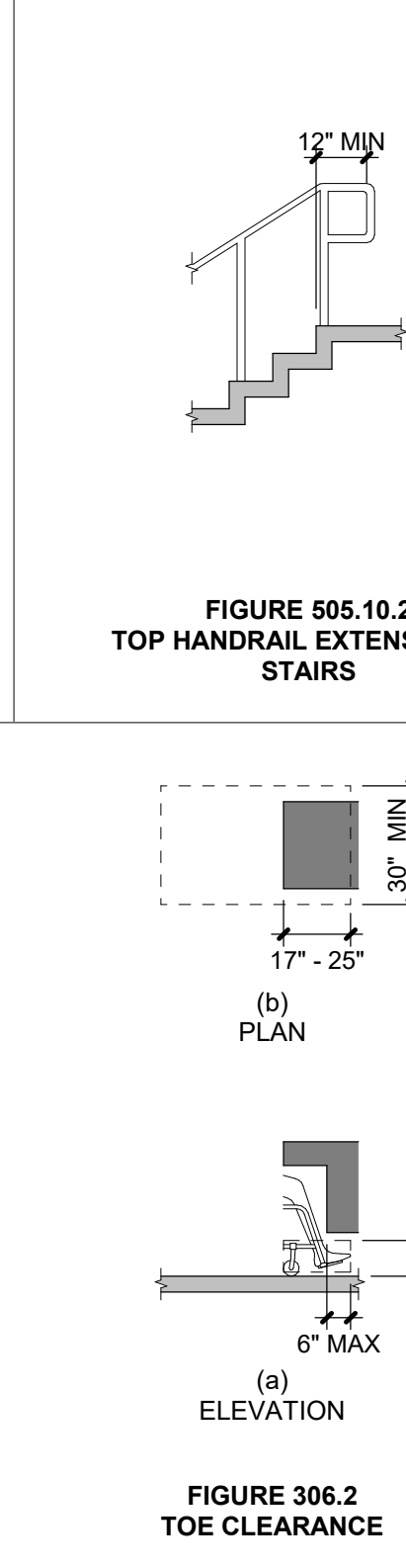
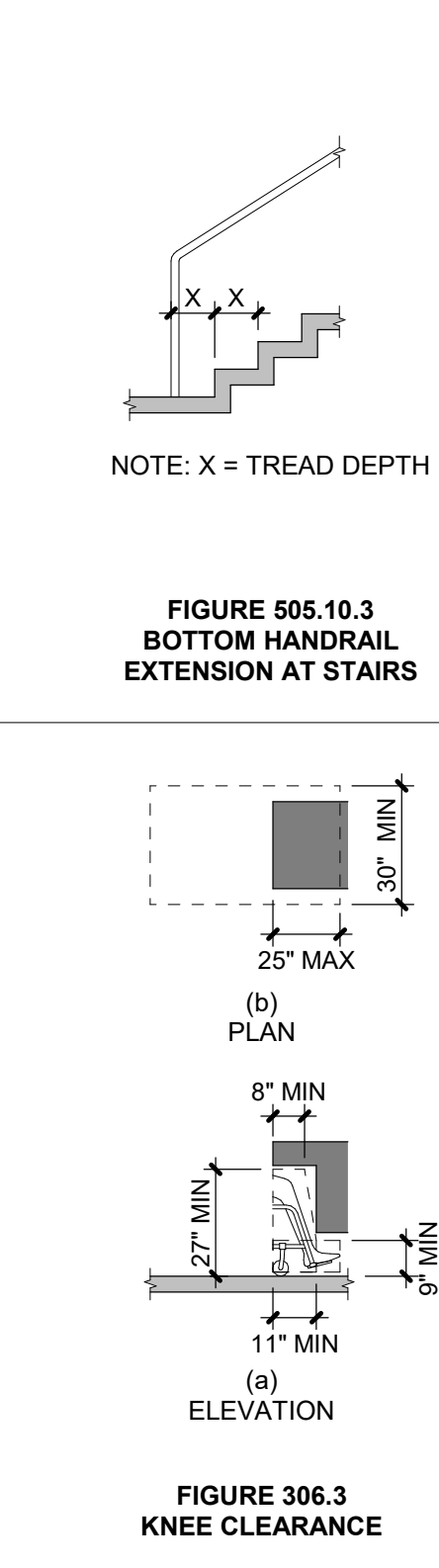
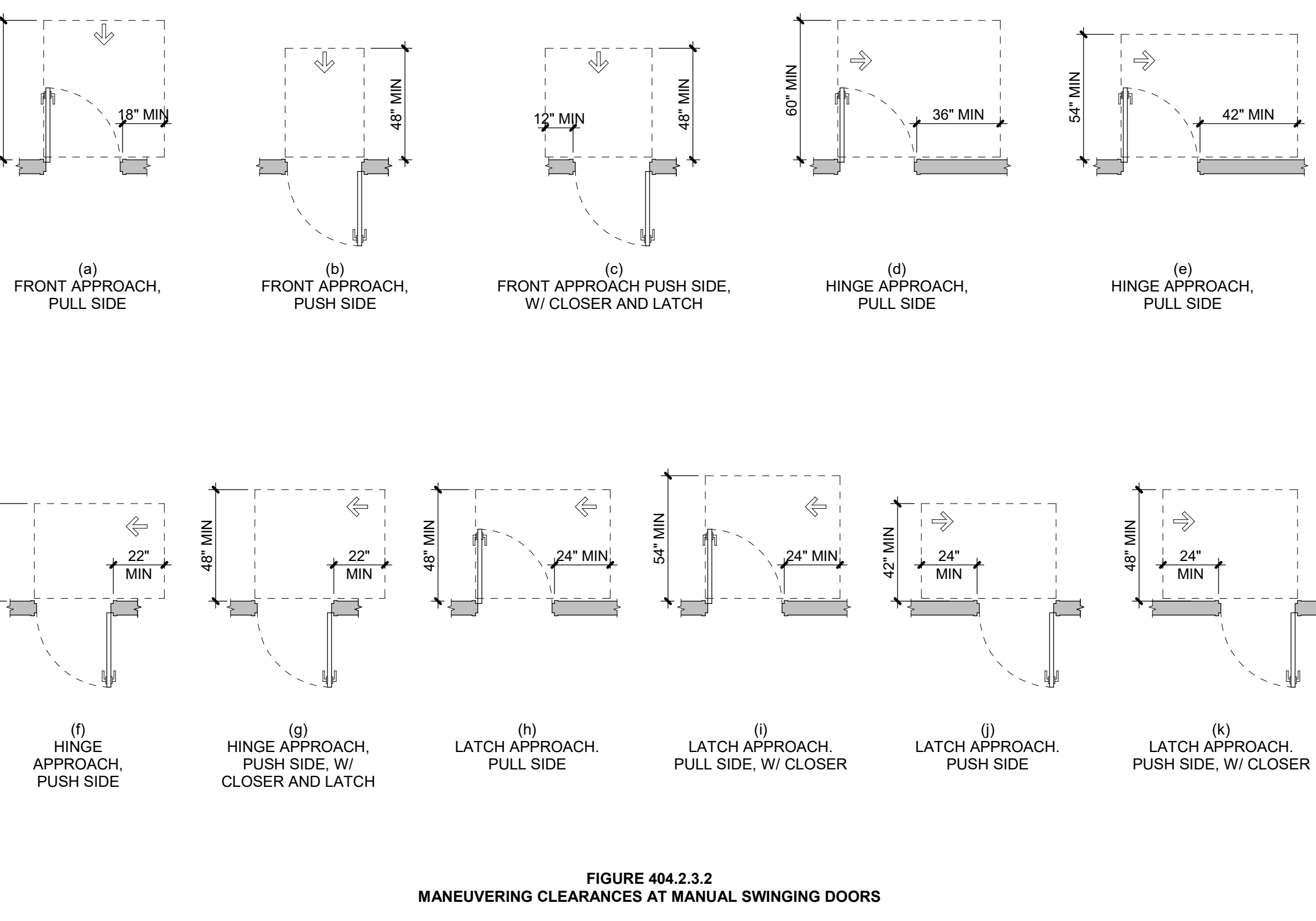


ACCESSIBILITY GENERAL NOTES

- ALL DIMENSIONS ARE FROM FINISH FACE TO FINISH FACE.
- REFERENCED STANDARD: 2009 ICC/ANSI A117.1 ACCESSIBLE AND USABLE BUILDINGS AND FACILITIES.
- ALL INDICATED NOTES AND DIAGRAMS ILLUSTRATED ADDRESS COMMON CONDITIONS WITHIN THE REFERENCE STANDARD. FOR CONDITIONS NOT DESCRIBED, THE CONTRACTORS SHOULD REFERENCE THE COMPLETE 2009 ICC/ANSI A117.1 ACCESSIBLE AND USABLE BUILDINGS AND FACILITIES.



DESIGNER / BUILDER
ARCO
DESIGN/BUILD INDUSTRIAL
44 SOUTH BROADWAY, SUITE 1003
WHITE PLAINS, NY 10601
P: 914.821.5535 F: 914.306.8010

ADBI | **DESIGN SERVICES**
Lincoln Equities Group, LLC

PROJECT TITLE
LINCOLN LOGISTICS BREWSTER-BLDG A
NY-312 & PUGSLEY RD, SOUTHEAST, NY 10509

ARCHITECT
ADBI / DESIGN SERVICES LLC
44 SOUTH BROADWAY, SUITE 1003
WHITE PLAINS, NY 10601

CIVIL ENGINEER
LANGAN ENGINEERING
300 KIMBALL DRIVE
PARISPPANY, NJ 07054

STRUCTURAL ENGINEER
SMITH/ ROBERTS AND ASSOCIATES, INC.
6501 BLUFF RD
INDIANAPOLIS, INDIANA 46217

MECHANICAL ENGINEER
NATIONAL DESIGN/ BUILD SERVICES
11840 BORMAN DRIVE
ST. LOUIS, MO 63146

ELECTRICAL ENGINEER
FJB ENGINEERING
5 CHRISTY DRIVE, SUITE 307
CHADDS FORD, PA 19317

PLUMBING ENGINEER
MCCARTHY ENGINEERING ASSOCIATES, INC.
315 EAST SECOND STREET
BOYERTOWN, PA 19512

FIRE PROTECTION ENGINEER
S A COMUNALE CO. INC.
2900 NEWPARK DRIVE
BARBERTON, OH 44203

SEAL

SUBMITTALS
NO. DATE DESCRIPTION
0 05.27.2022 PROGRESS SET

PROJECT NO.
AS286-21 | NY131

DRAWN BY
ARCO

SHEET TITLE
ACCESSIBILITY DETAILS - ICC A117.1-2009

SHEET NO.
G-0.10